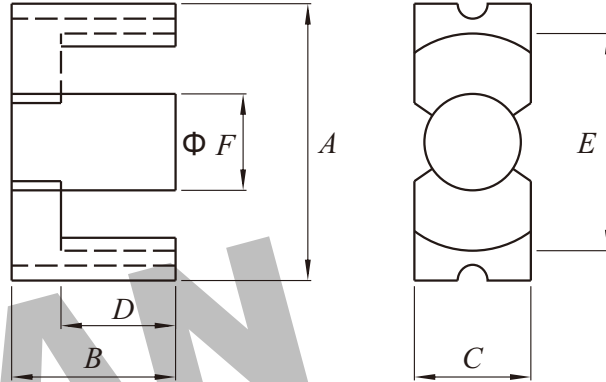




Dimension: (UNIT: mm)

A	52.2 ± 1.3
B	24.2 ± 0.15
C	13.4 ± 0.35
D	15.9 ± 0.4
E	32.1Min
F	13.4 ± 0.35
G	
H	

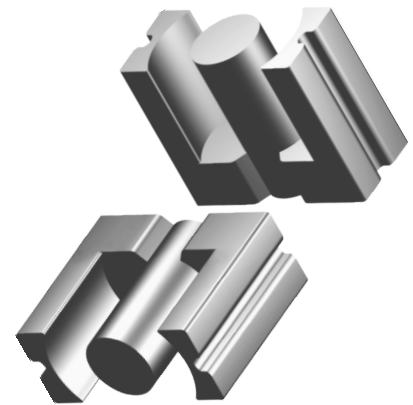


Test conditions

AL: F=1.0KHZ U=0.3V N=10Ts

Effective parameter

C1(mm) <sup>3</sup>	Ae(mm)	Le(mm <sup>2</sup> )	Ve(mm <sup>3</sup> )	Weight(g)
0.581	180	105	18800	≈ 56



Core halves

AL measured in combination with an non-gapped core half, unless otherwise stated.

Grade	Grade	μe	AIRGAP μe	Type number
P3	160 ± 3%	≈ 74	≈ 1920	EC 52-P3
	250 ± 3%	≈ 116	≈ 1100	EC 52-P3
	315 ± 3%	≈ 147	≈ 830	EC 52-P3
	400 ± 3%	≈ 185	≈ 620	EC 52-P3
	630 ± 5%	≈ 290	≈ 350	EC 52-P3
	3600 ± 25%	≈ 1660	≈ 0	EC 52-P3

Properties of core sets under power conditions

Grade	B (mT)at	Core loss (w) at	
	H=250 A/m F=25KHz T=100℃	F=25 KHz B=200mT T=100℃	f=100 KHz B=100mT T=100℃
P3	≥320	≤2.3	≤2.4

Note

- 1:Document is the property of FUAN Inc & is not allow to be duplicated without authorization
- 2:RoHS compliant.