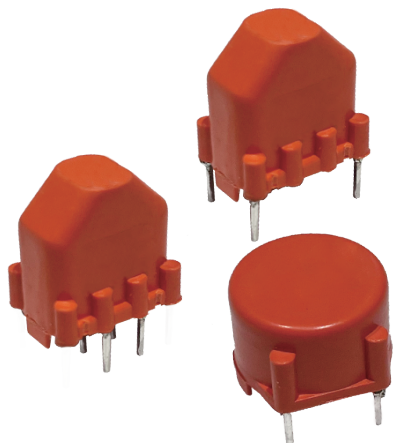


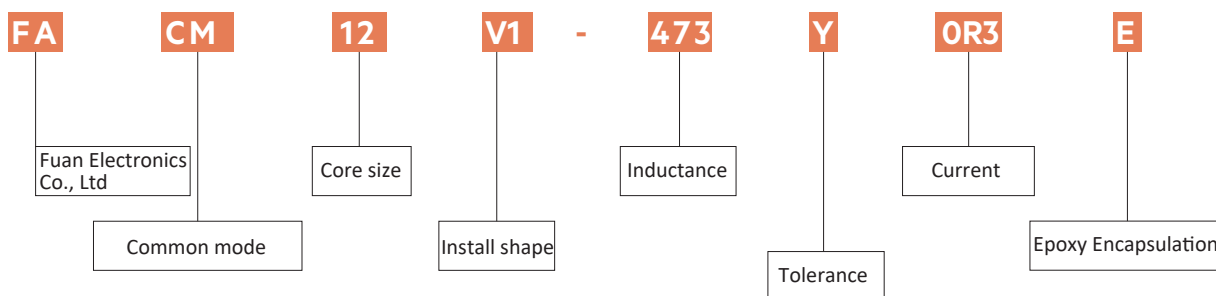
# CURRENT-COMPENSATED FRAME CORE DOUBLE CHOKES

## FACM12 SERIES



### ELECTRICAL SPECIFICATION

- Rated voltage 250 VAC
- Rated current 0.3 A to 6 A
- Rated inductance 0.2 mH to 47 mH
- Turns ratio: N1:N2=1:1±2%
- Hi-Pot: Pri-Sec: 1500VAC/5mA/2second("E" 3000VAC)
- Test Frequency Response: 10KHz 100mV
- Operating temperature range: -40°C to +125°C
- Inductance tolerance: +50/-30% at 20°C
- All parts meet RoHS compliance



### ELECTRICAL CHARACTERISTICS

Part No.	Ind. (mH)	Lstray typ(μH)	D.C.R (mΩ), typ	Rated Current(A)		
FACM12H-473YOR3	FACM12V1-473YOR3	FACM12V2-473YOR3	47	500	2200	0.3
FACM12H-393YOR4	FACM12V1-393YOR4	FACM12V2-393YOR4	39	450	2000	0.4
FACM12H-273YOR5	FACM12V1-273YOR5	FACM12V2-273YOR5	27	290	1400	0.5
FACM12H-183YOR5	FACM12V1-183YOR5	FACM12V2-183YOR5	18	250	1100	0.5
FACM12H-153YOR6	FACM12V1-153YOR6	FACM12V2-153YOR6	15	170	700	0.6
FACM12H-103YOR7	FACM12V1-103YOR7	FACM12V2-103YOR7	10	110	550	0.7
FACM12H-682Y1R2	FACM12V1-682Y1R2	FACM12V2-682Y1R2	6.8	80	280	1.2
FACM12H-332Y1R5	FACM12V1-332Y1R5	FACM12V2-332Y1R5	3.3	37	180	1.5
FACM12H-102Y2R0	FACM12V1-102Y2R0	FACM12V2-102Y2R0	1.0	13	80	2.0
FACM12H-601Y2R5	FACM12V1-601Y2R5	FACM12V2-601Y2R5	0.6	8	60	2.5
FACM12H-401Y3R6	FACM12V1-401Y3R6	FACM12V2-401Y3R6	0.4	6	35	3.6
FACM12H-301Y4R0	FACM12V1-301Y4R0	FACM12V2-301Y4R0	0.3	4	30	4.0
FACM12H-201Y6R0	FACM12V1-201Y6R0	FACM12V2-201Y6R0	0.2	2.5	15	6.0

# Product datasheet

## ELECTRICAL INFORMATION

Dimension in mm

