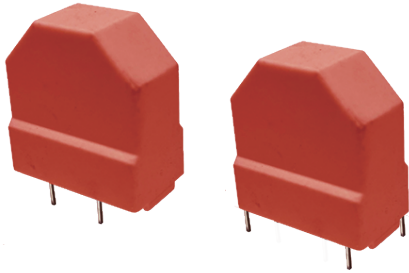


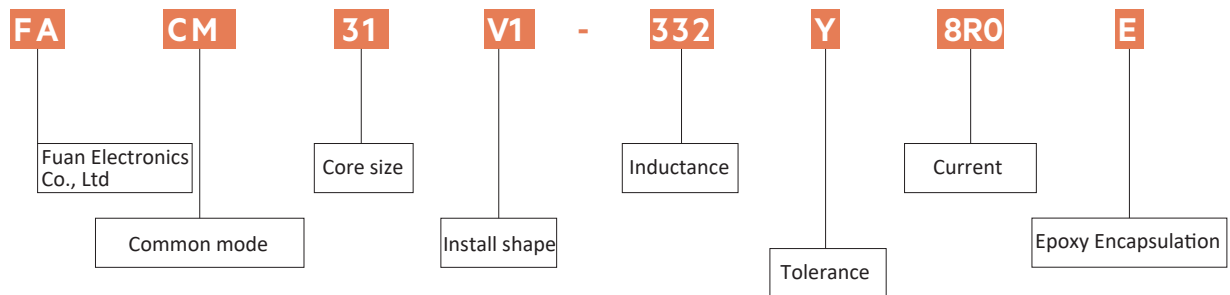
FRAME CORE CHOKES FOR POWER LINES

FACM31V SERIES



ELECTRICAL SPECIFICATION

- Rated voltage 250 VAC
- Rated current 1.50 A to 15.0 A
- Rated inductance 1 mH to 100 mH
- Turns ratio: N1:N2=1:1±2%
- Hi-Pot: Pri-Sec: 1500VAC/3mA/1second("E" 3000VAC)
- Test Frequency Response: 10KHz 100mV
- Operating temperature range: -40°C to +125°C
- Inductance tolerance: +50/-30% at 25°C
- All parts meet RoHS compliance
- Weight: Approximately 70.0g



ELECTRICAL CHARACTERISTICS

Part No.		Ind. (mH)	D.C.R (mΩ). typ	Rated Current(A)
FACM31V1-104Y1R5	FACM31V2-104Y1R5	100	550	1.5
FACM31V1-823Y2R0	FACM31V2-823Y2R0	82	350	2.0
FACM31V1-683Y2R3	FACM31V2-683Y2R3	68	270	2.3
FACM31V1-563Y2R5	FACM31V2-563Y2R5	56	230	2.5
FACM31V1-473Y3R0	FACM31V2-473Y3R0	47	165	3.0
FACM31V1-333Y3R5	FACM31V2-333Y3R5	33	120	3.5
FACM31V1-273Y4R0	FACM31V2-273Y4R0	27	100	4.0
FACM31V1-203Y4R5	FACM31V2-203Y4R5	20	75	4.5
FACM31V1-153Y5R5	FACM31V2-153Y5R5	15	50	5.5
FACM31V1-103Y6R0	FACM31V2-103Y6R0	10	35	6.0

Product datasheet

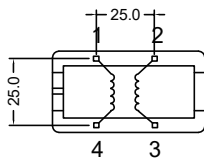
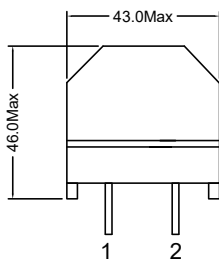
ELECTRICAL CHARACTERISTICS

Part No.		Ind. (mH)	D.C.R (mΩ). typ	Rated Current(A)
FACM31V1-822Y7R0	FACM31V2-822Y7R0	8.2	25	7.0
FACM31V1-682Y7R0	FACM31V2-682Y7R0	6.8	25	7.0
FACM31V1-562Y8R0	FACM31V2-562Y8R0	5.6	20	8.0
FACM31V1-472Y7R5	FACM31V2-472Y7R5	4.7	22	7.5
FACM31V1-332Y8R0	FACM31V2-332Y8R0	3.3	20	8.0
FACM31V1-272Y9R0	FACM31V2-272Y9R0	2.7	16	9.0
FACM31V1-252Y10R0	FACM31V2-252Y10R0	2.5	12	10.0
FACM31V1-202Y11R0	FACM31V2-202Y11R0	2.0	10	11.0
FACM31V1-152Y15R0	FACM31V2-152Y15R0	1.5	8	15.0
FACM31V1-102Y15R0	FACM31V2-102Y15R0	1.0	8	15.0

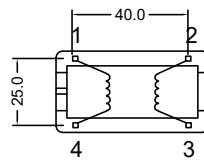
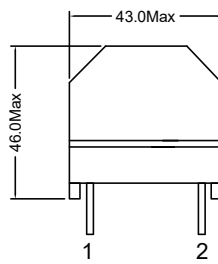
ELECTRICAL INFORMATION

Dimension in mm

Dimensions in: mm
Tolerance: .X ±0.50 .XX ±0.25



"V1"



"V2"

